

## No. 250Md

### Key for collet chuck with torque wrench socket

for chuck nuts (ER) to DIN 6499.

Drive 1/2" square socket with ball-engagement groove.

Special steel, hardened and **zinc-plated**.



Order no.	Size	D	L	S	SW [inch]	T	T1	Weight [g]
<b>52316</b>	<b>16</b>	32	69	45	1/2	5	16	140
<b>52308</b>	<b>25</b>	42	85	60	1/2	6	16	200
<b>52324</b>	<b>32</b>	50	85	60	1/2	6	16	215
<b>52340</b>	<b>40</b>	63	85	60	1/2	6	16	220

### Advantage:

Controlled tightening prevents damage to spindle changing tools on a machine.

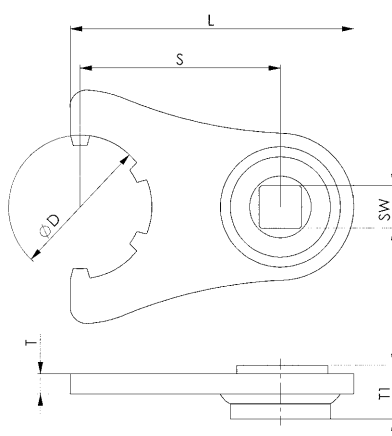
### Note:

The set value for the torque wrench is dependant on insertion dimension „S“.

The operating manual provided with your torque wrench contains the requisite information and calculation formulae.

### On request:

Other sizes available.



### Recommendations



No. 250,  
page 57



No. 771Md,  
page 50

## No. 902Md

### Open-ended spanner with torque wrench socket

for clamping nuts. Drive 1/2" square socket with ball-engagement groove. Special steel, hardened and zinc-plated.



Order no.	SW	L	S	SW1 [inch]	T	T1	Weight [g]
<b>52506</b>	25	78	45	1/2	6	16	170
<b>52514</b>	36	101	60	1/2	7	16	255
<b>52522</b>	46	108	60	1/2	8	16	340

### Advantage:

Controlled tightening prevents damage to spindle changing tools on a machine.

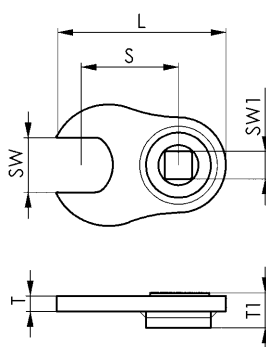
### Note:

The set value for the torque wrench is dependant on insertion dimension „S“.

The operating manual provided with your torque wrench contains the requisite information and calculation formulae.

### On request:

SW 65 fits clip no. 6540H - size M20/M24 available on request.



### Recommendations



DIN 894,  
page 66

Subject to technical alterations.