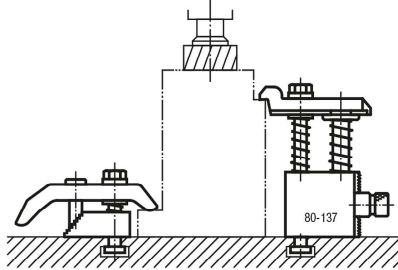


Clamp straps with adjustment unit

Item description/product images



Description

Material:

Base, ductile iron.

Clamp strap and clamping screw carbon steel.

Version:

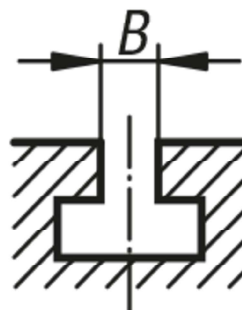
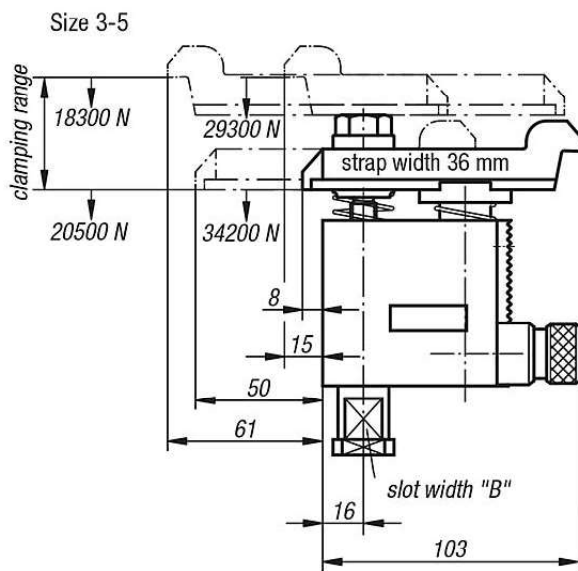
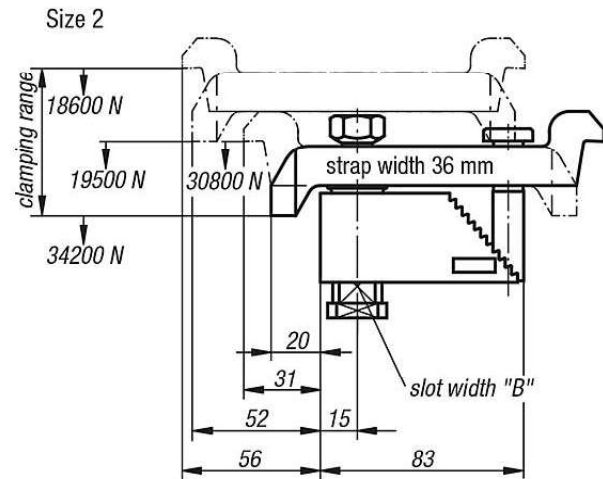
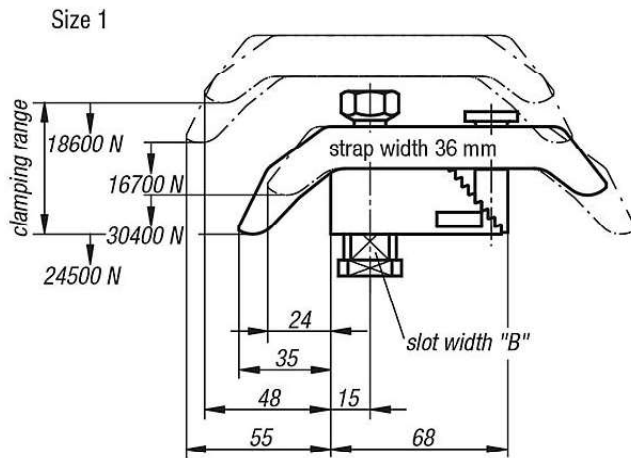
Black oxidised.

Note:

These clamp strap modules are universal, flexible clamps constructed from individual components building a compact unit. There are no loose parts which first have to be altered for a clamping operation. The compact design allows these clamps to be placed close to the workpiece enabling the full area of the machine table to be used.

Clamp straps with adjustment unit

Drawings



Overview of items

Clamp straps with adjustment unit

Clamp straps with adjustment unit

Overview of items

| Order No. | Size | Clamp range | Slot width B DIN 650 |
|-------------|------|-------------|-------------------------|
| K0004.10X12 | 1 | 0-35 | 12 |
| K0004.10X14 | 1 | 0-35 | 14 |
| K0004.10X16 | 1 | 0-35 | 16 |
| K0004.10X18 | 1 | 0-35 | 18 |
| K0004.20X12 | 2 | 25-85 | 12 |
| K0004.20X14 | 2 | 25-85 | 14 |
| K0004.20X16 | 2 | 25-85 | 16 |
| K0004.20X18 | 2 | 25-85 | 18 |
| K0004.30X12 | 3 | 80-137 | 12 |
| K0004.30X14 | 3 | 80-137 | 14 |
| K0004.30X16 | 3 | 80-137 | 16 |
| K0004.30X18 | 3 | 80-137 | 18 |
| K0004.40X12 | 4 | 125-224 | 12 |
| K0004.40X14 | 4 | 125-224 | 14 |
| K0004.40X16 | 4 | 125-224 | 16 |
| K0004.40X18 | 4 | 125-224 | 18 |
| K0004.50X12 | 5 | 160-300 | 12 |
| K0004.50X14 | 5 | 160-300 | 14 |
| K0004.50X16 | 5 | 160-300 | 16 |
| K0004.50X18 | 5 | 160-300 | 18 |