

Cam levers double

Item description/product images



Description

Material:

Carbon steel 1.7220.

Ball grip plastic.

Version:

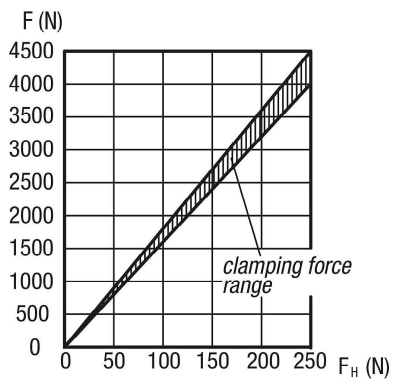
Tempered and black oxidised.

Note:

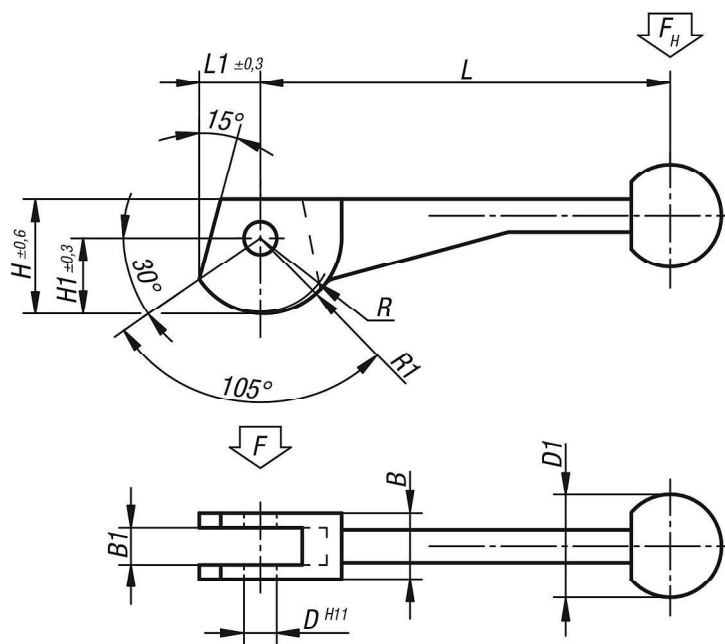
Suitable hinge pin, see K0007.

The cam lever is an eccentric lever that moves along a logarithmic spiral. Its clamping properties are even over the entire contact surface of the cam.

Force diagram



Drawings



Overview of items

Cam levers, double

Cam levers double

Overview of items

Order No.	L	L1	B	B1	H	H1	D	D1	R	R1
K0009.08	104±2	14,9	16	9	28,2	18,7	8	25	17,2	19,2
K0009.10	123±2	18,6	20	12	34,8	23,3	10	30	21,5	24
K0009.12	146±3	24,3	25	14	43,8	30,3	12	30	28	31,2