

Cam clamps with riser

Item description/product images



Description

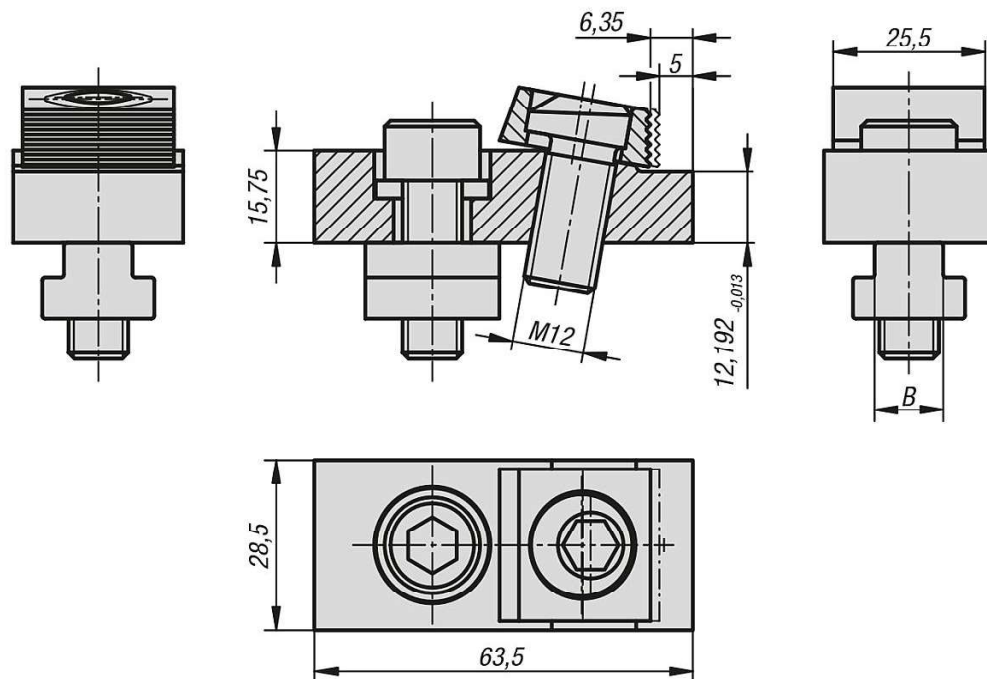
Material:
Steel.

Version:
Body tempered and black oxidised.
Square washer case hardened and brass-plated.

Note:
Also called riser clamps.
These cam clamps with riser can be used directly on machine tables. A positive down force is exerted during clamping.

On request:
Replacement cam screws.

Drawings



Overview of items

Cam clamps with riser

| Order No. | B Slot width | Clamping force kN |
|-----------|-----------------|-------------------------|
| K0028.12 | 12 | 12 |
| K0028.14 | 14 | 12 |
| K0028.16 | 16 | 12 |
| K0028.18 | 18 | 12 |

Cam clamps with riser

Overview of items
