

## Mushroom knobs biopolymer external thread

### Item description/product images



### Description

#### Material:

Biopolymer, beech.  
Threaded pin steel 5.8.

#### Version:

Screw trivalent blue passivated.  
Natural beech with beech fibres or coloured black grey.

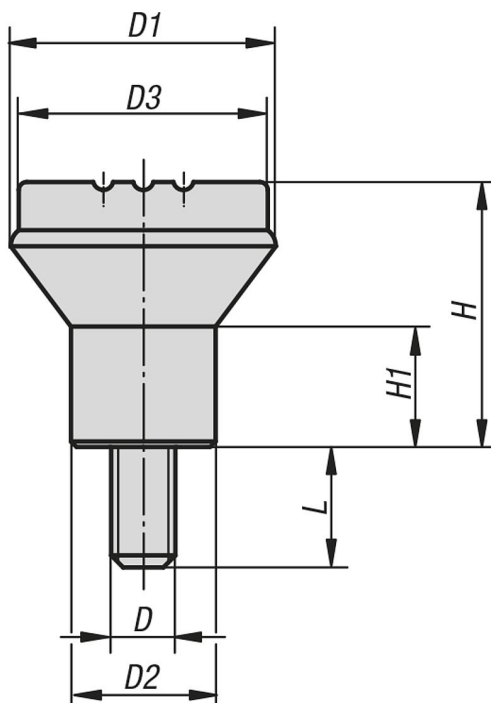
#### Advantages:

This biopolymer is manufactured entirely from renewable raw materials (oil free).  
Conservation of finite fossil resources.  
The wood fibres originate 100% from local, sustainably managed forests in Germany.

#### Features:

Excellent mechanical stability (certified with a minimum of 2x safety factor).  
Biopolymer is suitable for recycling (comparable to thermoplastics).  
Suitable for outdoor use (not biodegradable).  
Excellent resistance to strong acids and lyes.  
Short-term resistance to alcohol, fuel, mineral oil and grease.

### Drawings



### Overview of items

Order No.	Main colour	D	D1	D2	D3	H	H1	L
K0251.1005143X10	natural beech	M5	21	12	19	21	10	10
K0251.1006143X15	natural beech	M6	25	14	23	25	12	15

## Mushroom knobs biopolymer external thread

### Overview of items

Order No.	Main colour	D	D1	D2	D3	H	H1	L
K0251.1008143X15	natural beech	M8	33	19	33	33	15	15
K0251.100590X10	black grey RAL 7021	M5	21	12	19	21	10	10
K0251.100690X15	black grey RAL 7021	M6	25	14	23	25	12	15
K0251.100890X15	black grey RAL 7021	M8	33	19	33	33	15	15