

## Grease nipples button head DIN 3404

### Item description/product images



### Description

#### Material:

Steel or 1.4305 stainless steel

#### Version:

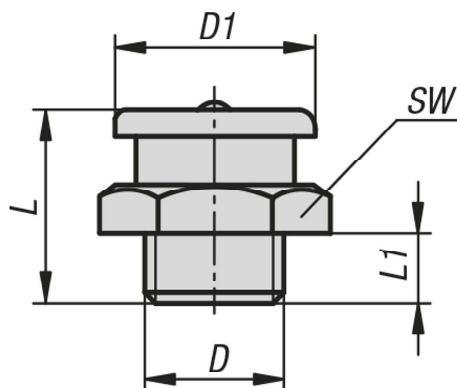
Steel electro zinc-plated.

Stainless steel bright.

#### Note:

As the construction of button head grease nipples allow for a high lubrication flow rate, they are especially useful for lubrication points which require a large grease volume. Because of the robust design, button head grease nipples are preferred for machines that are subjected to high external stress.

### Drawings



### Overview of items

#### Grease nipples button head DIN 3404

Order No.	Main material	D	D1	L	L1	SW
K1135.11006100	steel	M6x1	10	13,5	5,5	11
K1135.11008100	steel	M8x1	10	13,5	5,5	11
K1135.11010100	steel	M10x1	10	13,5	5,5	11
K1135.11018	steel	G1/8	10	13,5	5,5	11
K1135.11606100	steel	M6x1	16	17	6	17
K1135.11608100	steel	M8x1	16	17	6	17
K1135.11608125	steel	M8x1,25	16	17	6	17
K1135.11610100	steel	M10x1	16	17	6	17
K1135.11610150	steel	M10x1,5	16	17	6	17
K1135.11612150	steel	M12x1,5	16	17	6	17
K1135.11616150	steel	M16x1,5	16	18	7	17
K1135.11618	steel	G1/8	16	17	6	17
K1135.11614	steel	G1/4	16	17	6	17
K1135.21606100	stainless steel	M6x1	16	17	6	17
K1135.21608100	stainless steel	M8x1	16	17	6	17
K1135.21608125	stainless steel	M8x1,25	16	17	6	17
K1135.21610100	stainless steel	M10x1	16	17	6	17
K1135.21610150	stainless steel	M10x1,5	16	17	6	17
K1135.21612150	stainless steel	M12x1,5	16	17	6	17

## Grease nipples button head DIN 3404

### Overview of items

Order No.	Main material	D	D1	L	L1	SW
K1135.21618	stainless steel	G1/8	16	17	6	17
K1135.21614	stainless steel	G1/4	16	17	6	17
K1135.12216150	steel	M16x1,5	22	21,5	8	22
K1135.12214	steel	G1/4	22	21,5	8	22
K1135.12238	steel	G3/8	22	21,5	8	22
K1135.22216150	stainless steel	M16x1,5	22	21,5	8	22
K1135.22214	stainless steel	G1/4	22	21,5	8	22
K1135.22238	stainless steel	G3/8	22	21,5	8	22