

No. 6828V

## Heavy pneumatic toggle clamp

dual acting.

Max. operating pressure 6 bar.

With continuously adjustable opening angle in the range 10° to 135°. Aluminium case. With pneumatic end position cushioning and self-locking. With inductive query 24V as standard.

Supplied without clamp arm.

Accessories (not included in the standard scope of delivery):

- Clamping arm no. 6828SP centre, right and left
- Connecting plug for inductive query

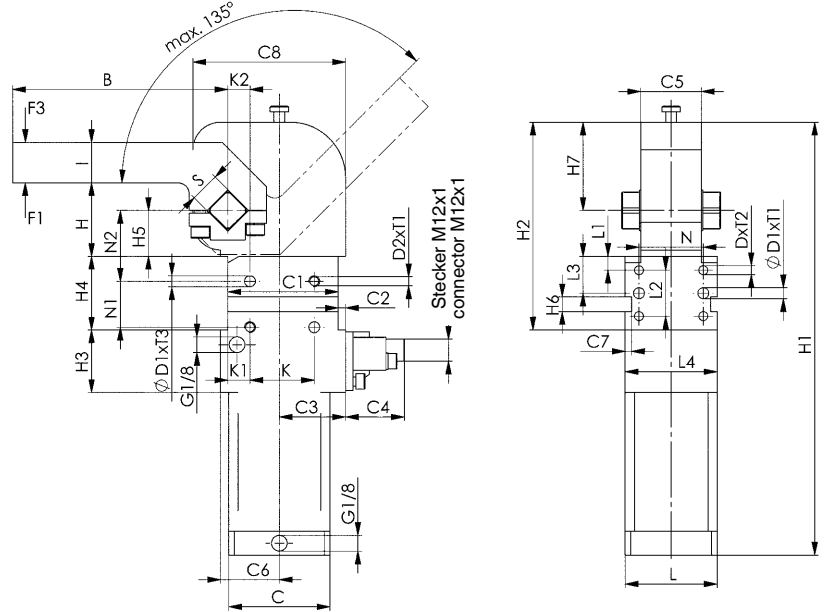


CAD

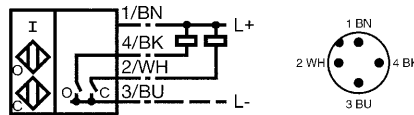
Order no.	Size	Clamping moment at 5 bar	Holding moment max.	Weight
		[Nm]	[Nm]	[Kg]
91835	40	120	380	1,4

### Application:

These pneumatic toggle clamps are suitable for use in material handling lines and special machines. Opening and clamping position of the clamp can be controlled electrically, allowing intergration into automated manufacturing processes.



Connection sketch:



O ... open  
C ... close

### Recommendations



No. 6828SP,  
page 143



No. 6829V,  
page 137



No. 6828V,  
page 144

### Dimensions:

Order no.	Size	B	C	C1*	C2	C3	C4	C5-0.5	C6	C7	C8	D	dia. D1 H7	D2	H ±0.2	H1	H2	H3	H4 +0.1	H5
91835	40	117	55	60	4	36	34	33	32	3,5	83	M6	6	M6	40	235,5	113	34	40	25

Order no.	Size	H6 N9	H7	I ±0,1	K*	K1 ±0.05	K2 ±0.05	L	L1 ±0,1	L2*	L3 ±0.05	L4	N*	N1*	N2 ±0.05	S h9	T1	T2	T3	Piston dia.
91835	40	8	48	22	35	12	12	50	7,5	25	20	50	35	25	38,5	16	8	12	6	40

\* Tolerance for peg holes ±0.02 mm; for threaded holes ±0.1 mm.

Subject to technical alterations.