

Elevating castors with foot with bolt hole or mounting plate

Item description/product images



Description

Material:

Housing die-cast aluminium.

Roller break resistant polyamide 6, Shore 70D.

Foot hard rubber.

Version:

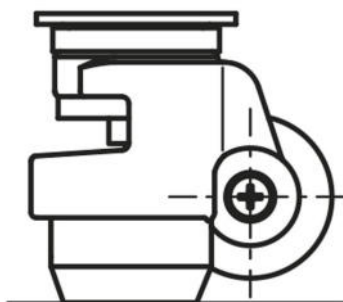
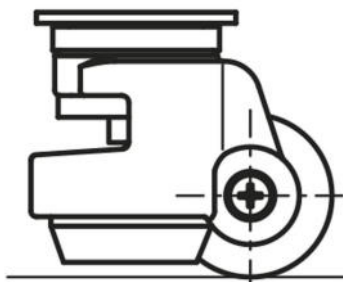
Housing, powder-coated, ivory.

Steel parts trivalent blue passivated.

Roller and foot black.

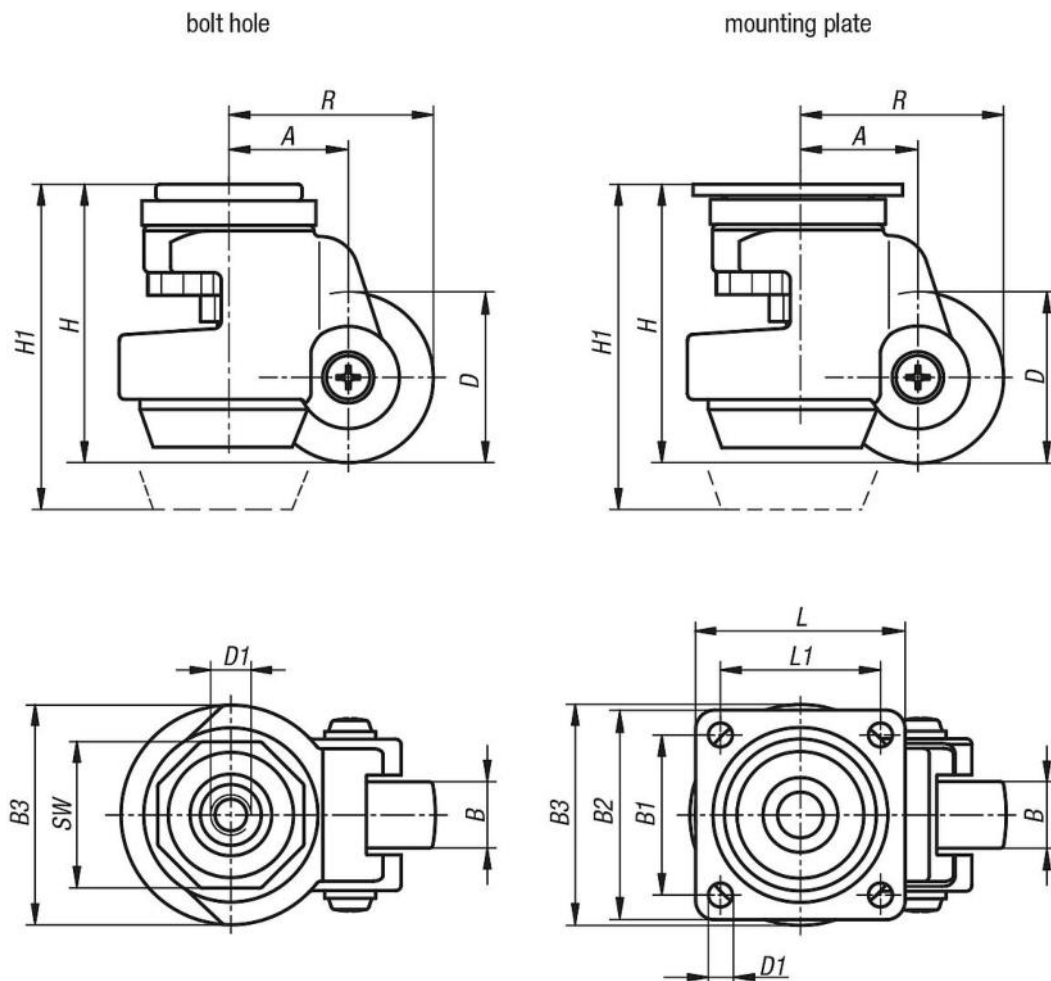
Note:

Elevating castor with foot. With sealed ball bearing in the swivel head. Height adjustment with a 13 mm spanner or by the integrated adjustment screw. Wheel axle bolted.



Elevating castors with foot with bolt hole or mounting plate

Drawings



Overview of items

Elevating castors with foot with bolt hole or mounting plate

Order No.	Version 1	Wheel bearing	D	D1	A	B	B1	B3	H	H1	L	L1	R	SW	Permissible load kg
K1786.045180	with locking system	plain bearing	45	M8x12	32	18	-	58	72	82	-	-	54,5	40	180
K1786.050220	with locking system	plain bearing	50	M12x15	38	22	-	72	84	94	-	-	63	46	250
K1786.063290	with locking system	plain bearing	63	M12x15	46	29	-	85	104	119	-	-	77,5	65	500
K1786.045181	with locking system	plain bearing	45	7	32	18	42	58	72	82	55	42	54,5	-	180
K1786.050221	with locking system	plain bearing	50	7	38	22	58	72	84	94	73	58	63	-	250
K1786.063291	with locking system	plain bearing	63	9	46	29	70	85	104	119	90	70	77,5	-	500