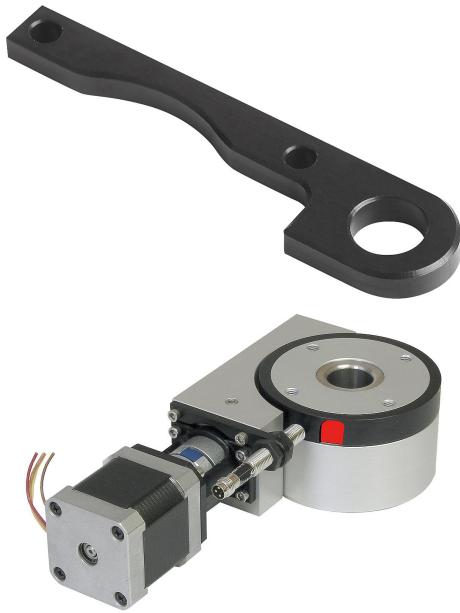


Item description/product images



Description

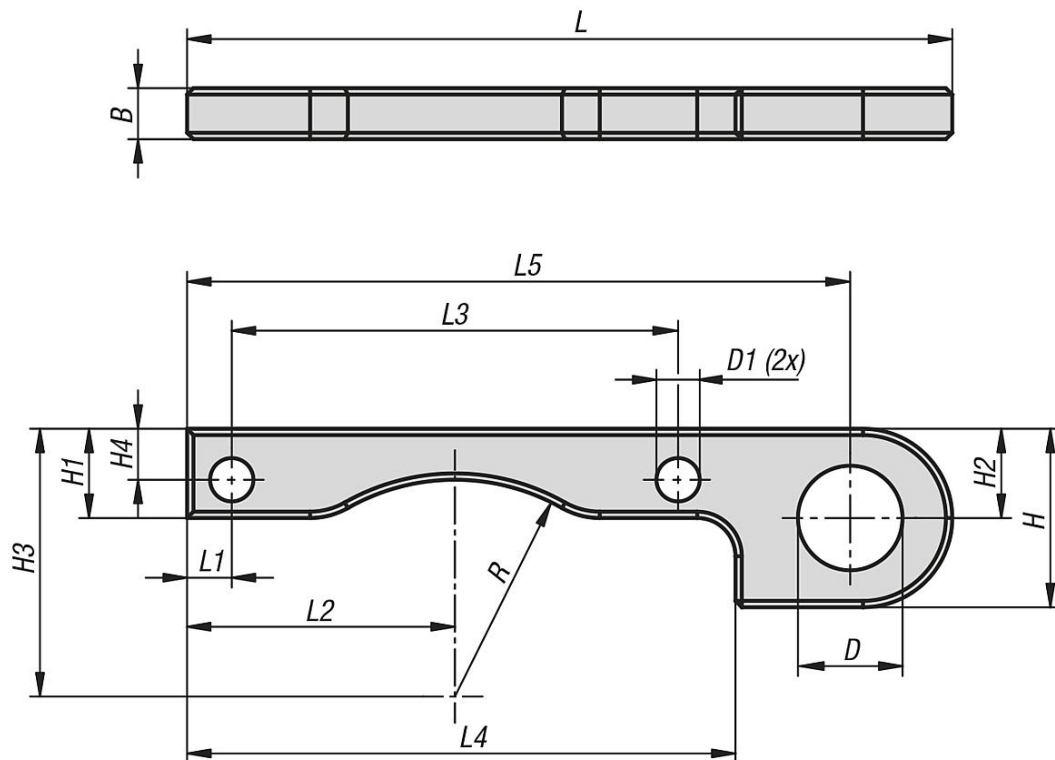
Material:
Aluminium alloy.

Version:
Black anodised

Note:

The sensor holder is used to fasten inductive proximity switches (e.g. 20910-050) to the rotary positioning stages with electric drive allowing the switch point to be positioned anywhere. The ring with the switch slot can be freely rotated counter to the rotary disc.

Drawings



Overview of items

Order No.	Size	B	D	D1	H	H1	H2	H3	H4	L	L1	L2	L3	L4	L5	R
21094-12	12	4	8,2	3,2	14	7	7	21	4	60	3,5	21	35	43	52	17

