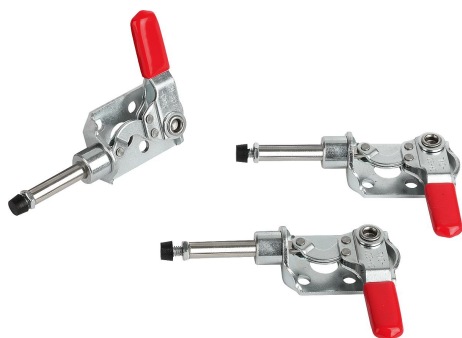


Toggle clamps mini push-pull

Item description/product images



Description

Material:

Steel.

Version:

Trivalent passivated.
Plastic grip oil resistant.

Note:

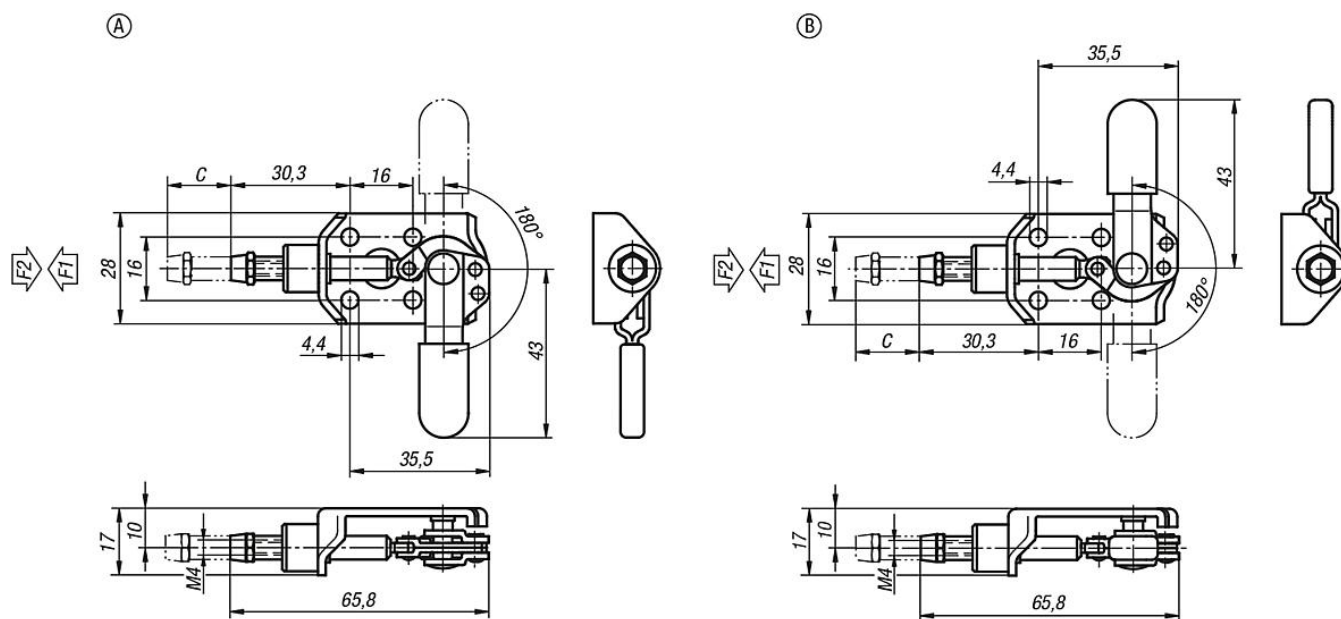
Push-pull toggle clamps with very low profile. As the clamps lock in the open and closed handle positions, they can be used to clamp when pushing or pulling.

Drawing reference:

Form A: Thrust exerted by rotating handle to the right

Form B: Thrust exerted by rotating handle to the left

Drawings



Overview of items

Order No.	Form	C (travel)	Retaining force F2 N	Retaining force F1 N
K0745.10050	A	16	500	500
K0745.20050	B	16	500	500