

Crank handles with cylindrical revolving grip, locating hole without slot

Item description/product images



Description

Material:

Crank thermoplastic.
Cylinder grip thermoplastic and steel.

Version:

Black grey thermoplastic.
Steel parts black oxidised.

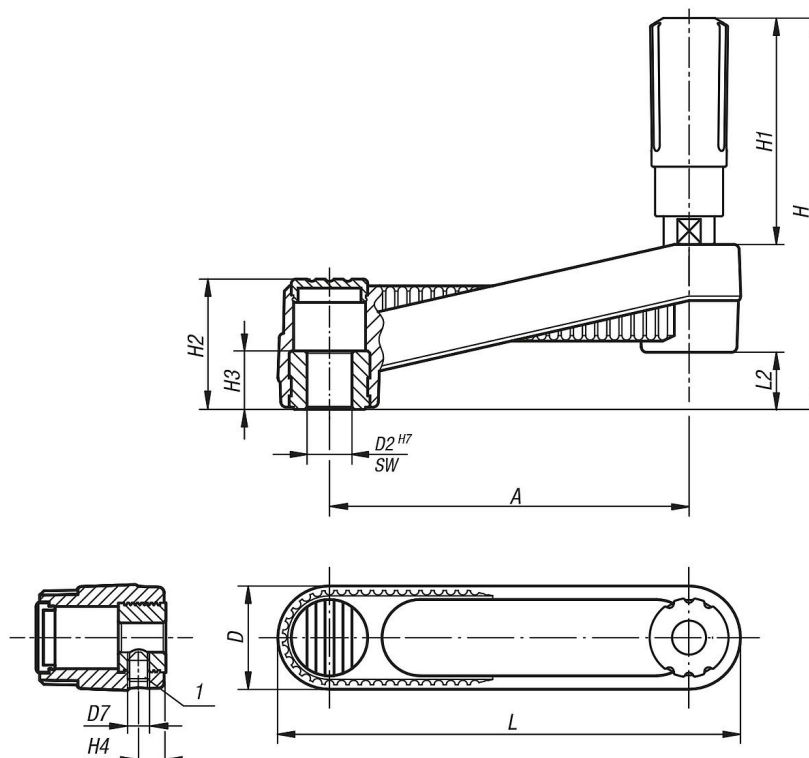
Note:

The hub cover and the revolving cylinder grip are supplied unassembled.
To assemble, screw the grip into the tapped hole provided.
Versions with transverse bore are secured using the ISO 4027 (DIN 914) grub screw.

Drawing reference:

1) Position of the transverse bore to the keyway is offset by 90°.

Drawings



Crank handles with cylindrical revolving grip, locating hole without slot

Overview of items

Crank handles with revolving grip

Order No.	Version 1	Version 2	A	D	D2	D7	H	H1	H2	H3	H4	L	L2
K0659.3108	reamed hole	without transverse hole	80	24	8	-	85,8	49,1	28,5	13	-	104	12,7
K0659.3110	reamed hole	without transverse hole	80	24	10	-	85,8	49,1	28,5	13	-	104	12,7
K0659.3210	reamed hole	without transverse hole	100	29	10	-	107,1	61,4	35,5	13	-	129	15,7
K0659.3212	reamed hole	without transverse hole	100	29	12	-	107,1	61,4	35,5	13	-	129	15,7
K0659.3312	reamed hole	without transverse hole	125	36	12	-	139,5	82,5	44	18,5	-	161	19,5
K0659.3314	reamed hole	without transverse hole	125	36	14	-	139,5	82,5	44	18,5	-	161	19,5
K0659.31086	reamed hole	with transverse bore	80	24	8	M6	85,8	49,1	28,5	13	7,5	104	12,7
K0659.31106	reamed hole	with transverse bore	80	24	10	M6	85,8	49,1	28,5	13	7,5	104	12,7
K0659.32106	reamed hole	with transverse bore	100	29	10	M6	107,1	61,4	35,5	13	7,5	129	15,7
K0659.32126	reamed hole	with transverse bore	100	29	12	M6	107,1	61,4	35,5	13	7,5	129	15,7
K0659.33126	reamed hole	with transverse bore	125	36	12	M6	139,5	82,5	44	18,5	7,5	161	19,5
K0659.33146	reamed hole	with transverse bore	125	36	14	M6	139,5	82,5	44	18,5	7,5	161	19,5