

## Plastic cylindrical grips, revolving, with internal thread

### Item description/product images



### Description

#### Product description:

Cylindrical grips are supplied assembled and can be screwed onto handwheels, crank handles, etc.

The grooves and conical shape ensure that the cylindrical grips have optimised haptics and good grip.

#### Material:

Grip thermoplastic.

Centre pin steel grade 5.8 or stainless steel 1.4404.

#### Version:

Grip, black.

Steel parts, black oxidised.

Stainless steel bright.

#### Advantages:

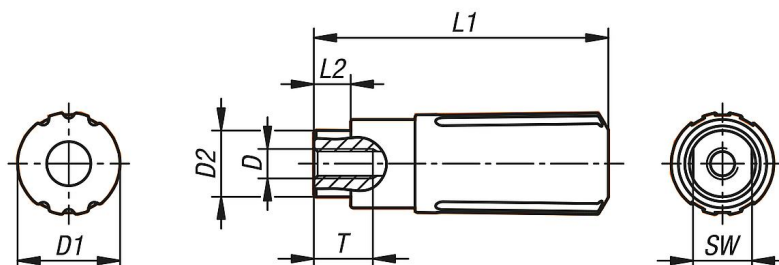
Optimised haptics and good grip

Grips for handwheels and cranks

Various thread sizes

NOVO grip KIPP design

### Drawings



### Overview of items

Order No.	Thread type	Component material	Size	D	D1	D2	L1	L2	T	SW
K1468.1104	internal thread	steel	1	M4	14	9	40	5	8	8
K1468.1205	internal thread	steel	2	M5	16	11	49,1	5,1	10	10
K1468.1306	internal thread	steel	3	M6	20	14	61,4	6,4	12	12
K1468.1408	internal thread	steel	4	M8	25	18	82,5	12,5	16	15
K1468.3104	internal thread	stainless steel	1	M4	14	9	40	5	8	8
K1468.3205	internal thread	stainless steel	2	M5	16	11	49,1	5,1	10	10
K1468.3306	internal thread	stainless steel	3	M6	20	14	61,4	6,4	12	12

## Plastic cylindrical grips, revolving, with internal thread

### Overview of items

Order No.	Thread type	Component material	Size	D	D1	D2	L1	L2	T	SW
K1468.3408	internal thread	stainless steel	4	M8	25	18	82,5	12,5	16	15